



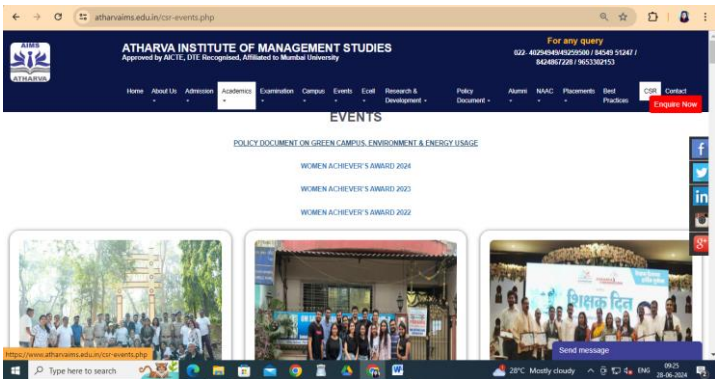
# ATHARVA INSTITUTE OF MANAGEMENT STUDIES

( Approved by AICTE, DTE & Affiliated to University of Mumbai )

## 7.1.2: The Institution has facilities and initiatives for

1. Alternate sources of energy and energy conservation measures
2. Management of the various types of degradable and non-degradable waste
3. Water conservation
4. Green campus initiatives
5. Disabled-friendly, barrier free environment

Response: A. All of the above

DVV Clarification	HEI Response
1. Policy Document of the institution	<p><b>Policy Document on Green Campus</b></p> <p><b>ALSO AVAILABLE ON AIMS WEBSITE -&gt; CSR TAB:</b></p> <p><a href="https://www.atharvaims.edu.in/pdf/green_campus.pdf">https://www.atharvaims.edu.in/pdf/green_campus.pdf</a></p> 
2. Any other data related to the metrics	<ul style="list-style-type: none"> <li>• Alternate sources of energy and energy conservation measures – <b>Led bulbs, Generator</b></li> <li>• Management of the various types of degradable and non-degradable waste – <b>Waste Collection Bins, Plastic Free Campus, Composting Machine, Sewage Treatment Plant</b></li> <li>• Water conservation – <b>Rain Water Harvesting</b></li> <li>• Green campus initiatives – <b>Green Campus, plantation, sprinklers</b></li> <li>• <b>Disabled-friendly, barrier free Environment from</b></li> <li>• <b>E-Waste Policy, Bills</b></li> </ul>



# ATHARVA INSTITUTE OF MANAGEMENT STUDIES

(Approved by AICTE, DTE & Affiliated to University of Mumbai )

( NAAC Accredited )

## POLICY DOCUMENT ON GREEN CAMPUS, ENVIRONMENT AND ENERGY USAGE

### Contents

Preamble.

I. Objectives.

II. Practices.

A. Green Environment and Clean Campus.

B. Maintenance of Water Bodies.

C. Water Conservation and Management.

D. Paperless Operating Procedure.

E. Landscaping with Trees and Plants.

F. Energy Use and Conservation.

G. Air Pollution Management.

H. Ban on Single-use Plastics on the Campus.

III. References



*Handwritten signature*  
DIRECTOR  
Atharva Institute of Management Studies  
MUMBAI-95.

AET Campus, Malad-Marve Road, Charkop Naka, Malad (West), Mumbai 400 095. INDIA.

Phone : + 91 (22) 4029 4949 / 49259500

E-mail : [administration@atharvaims.edu.in](mailto:administration@atharvaims.edu.in) • Web : [www.atharvaims.edu.in](http://www.atharvaims.edu.in)



# ATHARVA INSTITUTE OF MANAGEMENT STUDIES

(Approved by AICTE, DTE & Affiliated to University of Mumbai)

( NAAC Accredited )

## Policy Document on Green campus, Environment and Energy Usage

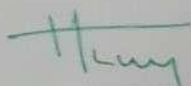
### Preamble

Atharva Institute of Management Studies, Mumbai with a vision of *Clean and Green Campus* to promote sustainable and eco-friendly practices in the campus and beyond the campus. The green campus concept offers the institution an opportunity to take the lead in redefining its environmental culture through instilling environmental ethics among students and staff. The environment and energy policy will help us to embed efficiency and environmental awareness into our everyday activities, thus helping us to realize our responsibilities and commitment to conservation of natural resources and to limit its usage.

### I. Objectives

- Implement and manage green and sustainable initiatives on campus
- Monitor and reduce waste and activities
- Foster a culture of sustainability awareness, action in the campus and local community
- To motivate students to adopt environment friendly practices to save electricity, save water, by making, distributing and use of paper bags,



  
DIRECTOR  
Atharva Institute of Management Studies  
MUMBAI-95.



## ATHARVA INSTITUTE OF MANAGEMENT STUDIES

(Approved by AICTE, DTE & Affiliated to University of Mumbai)

( NAAC Accredited )

### II. Practices

The Institution is committed to managing its campus in accordance with responsibilities towards promoting sustainable environment. These responsibilities can be demonstrated within the following areas;

- A. Green Environment & Clean Campus through Solid, liquid & E - Waste Management
- B. Water Conservation and Management
- C. Paperless operating procedure
- D. Landscaping with Trees and Plants
- E. Energy Use and Conservation
- F. Ban on Single-use Plastics on the Campus

#### A. Green Environment and Clean Campus

The students are given strict instructions to maintain the campus clean. A gardener and full-time adequate support staff are appointed for the maintenance of litter free clean and Green Campus. Solid waste is segregated as bio degradable and non-degradable and handed over to Municipal Corporation. All offices and classrooms are provided with dustbins for dry wastage disposal. Segregation of waste into dry and wet waste from the separately allotted dustbins is done in strategic locations, thus maintaining the Campus clean and Eco-friendly. Food leftovers from the canteen is treated and converted into Vermicompost in the vermin compost pit.



*[Signature]*  
DIRECTOR  
Atharva Institute of Management Studies  
MUMBAI

AET Campus, Malad-Marve Road, Charkop Naka, Malad (West), Mumbai 400 095. INDIA.

Phone : + 91 (22) 4029 4949 / 49259500

E-mail : [administration@atharvaims.edu.in](mailto:administration@atharvaims.edu.in) • Web : [www.atharvaims.edu.in](http://www.atharvaims.edu.in)





## ATHARVA INSTITUTE OF MANAGEMENT STUDIES

(Approved by AICTE, DTE & Affiliated to University of Mumbai )

( NAAC Accredited )

The college adopts most scientific and eco-friendly e-waste disposal mechanisms such as Annual Maintenance Contract is maintained to periodically review the effective functioning of CPU's and Monitors and expert recommendations are followed to dispose the same in the market. The institution has a contract for approved E-Waste Management and Disposal facility in order to dispose E-waste in scientific manner. Obsolete workable computers, printers and other equipment discarded by departments are sold as scrap. The cartridges of printers are refilled outside the college campus. UPS Batteries are recharged and repaired by the suppliers.

Students are made aware that conserving water is equivalent to conserving their future. Refilling water bottle from the water purifier is one of the best practices followed. In house - plumbers attend promptly to fix leakages and wastage of water.

Green Audit is conducted from time to time to identify, quantify, describe and priorities a framework of Environment Sustainability in compliance with the applications, policies and standards.



*Handwritten signature*  
Atharva Institute of Management Studies  
Mumbai

AET Campus, Malad-Marve Road, Charkop Naka, Malad (West), Mumbai 400 095. INDIA.

Phone : + 91 (22) 4029 4949 / 49259500

E-mail : [administration@atharvaims.edu.in](mailto:administration@atharvaims.edu.in) • Web : [www.atharvaims.edu.in](http://www.atharvaims.edu.in)

### **B. Maintenance of Water Bodies**

College gets water supply from local municipality every day. The institution has a good storage of ground water, drinking water and water for cleaning purpose. For drinking purpose, the Institution has an Aqua guard water purifier facility on every floor.

College has rain water harvesting pits, which function efficiently during the rainy season. It is made mandatory to clean and disinfect water holding tanks at least monthly once or more often, if required. Water filters are replaced periodically to provide the students and staff with pure drinking water.

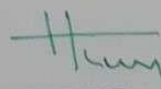
### **C. Water Conservation and Management**

The college has installed rainwater harvesting mechanism wherein the rainwater is accumulated and deposited for reuse. The water collected is directed to a deep pit of bore-well for later use.

### **D. Paperless Operating Procedure**

Several initiatives are taken to minimize the usage of paper. Digital storage of documents is one such measure wherein the technology is used to a greater extent for communication among the staff and the students rather than paper communication. WhatsApp-class wise groups, Department wise groups, etc. facilitate E-communication and use of public address systems reducing usage of paper in notices and circulars.



  
DIRECTOR  
Atharva Institute of Management Studies  
MUMBAI-95.



## ATHARVA INSTITUTE OF MANAGEMENT STUDIES

(Approved by AICTE, DTE & Affiliated to University of Mumbai )

( NAAC Accredited )

### E. Landscaping with Trees and Plants

The institution organizes Tree Plantation program every year at the College Campus.. Students and staff enthusiastically initiate and participate in the tree plantations drive on the campus and also outside the campus. Environmental promotional activities conducted to bring awareness among the students regarding advantages of tree plantation for an Eco-friendly Environment. The plantation program includes plantation of various types of ornamental and medicinal variety, wild plant species stepping up the oxygen levels on the campus.

### F. Energy Use and Conservation

- To use LED Bulbs replacing tube lights in classrooms and administrative office.
- Energy audit is conducted to identify the extent of energy consumption and find appropriate strategies of conservation.

### G. Ban on Single-use Plastics on the Campus

The institution conducts sensitization programs on the harmful impact of single-use plastics and mandates all the students - to avoid carrying non-bio-degradable plastic items to the institution, which includes plastic bags, cups, plates, small drinking water bottles, straws and sachets.



  
DIRECTOR  
Atharva Institute of Management Studies  
MUMBAI-85

AET Campus, Malad-Marve Road, Charkop Naka, Malad (West), Mumbai 400 095. INDIA,

Phone : + 91 (22) 4029 4949 / 49259500

E-mail : [administration@atharvaims.edu.in](mailto:administration@atharvaims.edu.in) • Web : [www.atharvaims.edu.in](http://www.atharvaims.edu.in)



## ATHARVA INSTITUTE OF MANAGEMENT STUDIES

(Approved by AICTE, DTE & Affiliated to University of Mumbai )

( NAAC Accredited )

These strategies are incorporated into the institutional planning and budgeting processes with the aim of developing a clean and green campus. This policy will be communicated to the students and employees via internal communication channels and will be made available to all the stakeholders on the institutional website.

All the stakeholders are required to abide by the policy to make the college campus green, clean and eco-friendly.

### References

- UGC Guidelines for development of green campus, 2016
- Swachh Campus - A manual for Swachhta Ranking of Higher Education Institutions, Government of India Ministry of Human Resource Development, 2017

[https://www.ugc.gov.in/pdfnews/2262633\\_Solar-Cities.pdf](https://www.ugc.gov.in/pdfnews/2262633_Solar-Cities.pdf)

<https://www.mhicre.org/pdf/Swachh%20Campus%20Manual.pdf>



*Handwritten signature*  
15/4/23  
Atharva Institute of Management Studies  
Mumbai

AET Campus, Malad-Marve Road, Charkop Naka, Malad (West), Mumbai 400 095. INDIA.

Phone : + 91 (22) 4029 4949 / 49259500

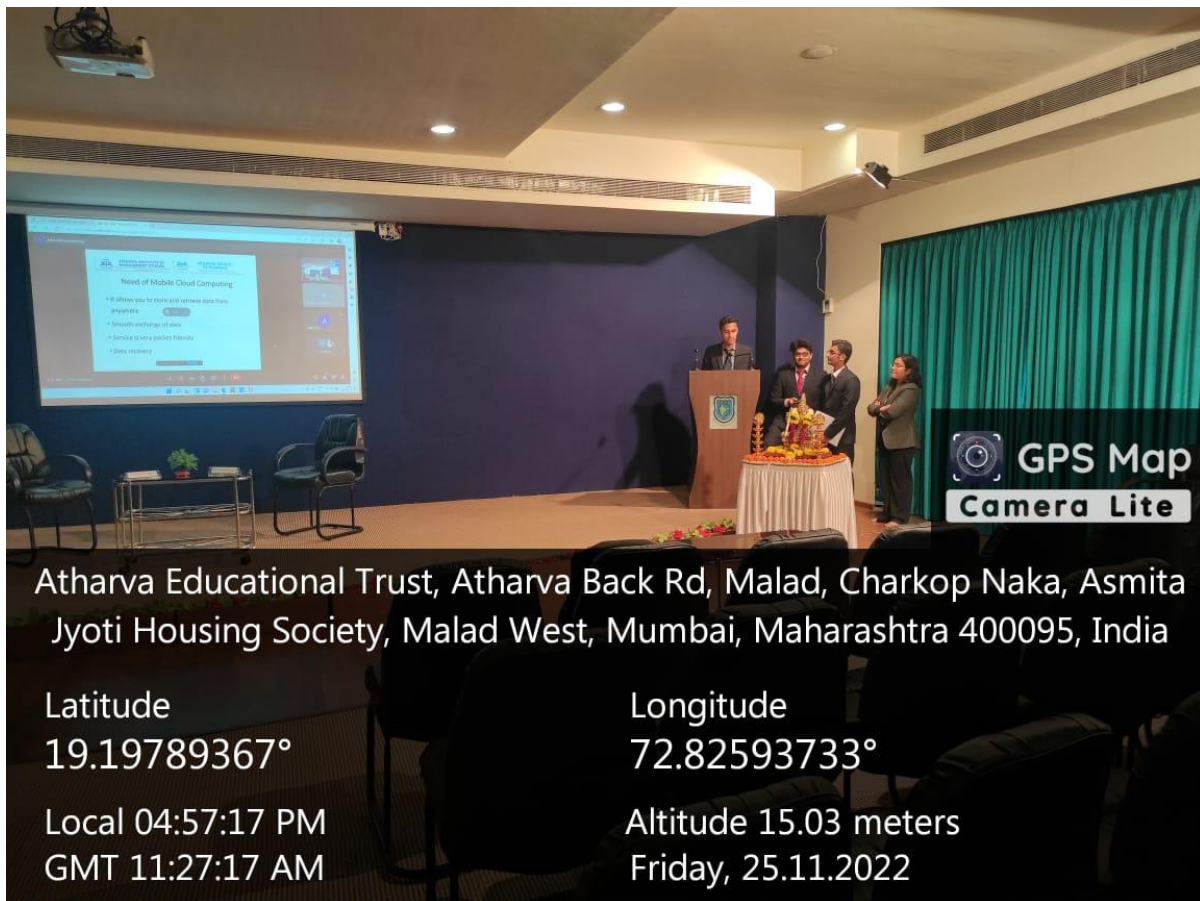
E-mail : [administration@atharvaims.edu.in](mailto:administration@atharvaims.edu.in) • Web : [www.atharvaims.edu.in](http://www.atharvaims.edu.in)

**DIRECTOR**  
Atharva Institute of Management Studies  
MUMBAI-95.





Geo-tagged photographs/videos of the facilities  
**LED Lights in Seminar Hall**  
Paper Presentation during International Research Conference



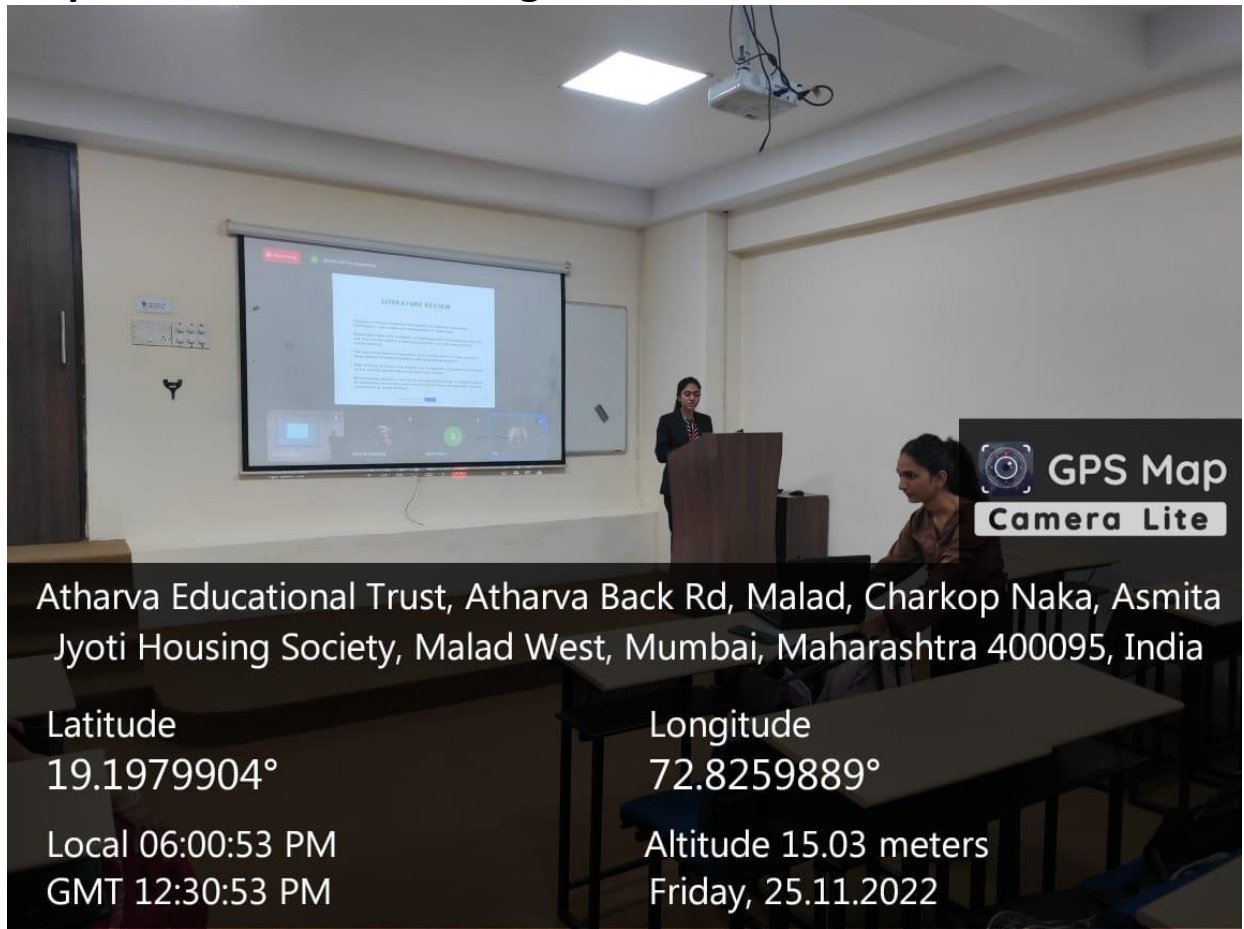
  
DIRECTOR  
Atharva Institute of Management Studies  
MUMBAI-95.



Geo-tagged photographs/videos of the facilities

## **Class Room**

### **Paper Presentation during International Research Conference**



  
**DIRECTOR**  
Atharva Institute of Management Studies  
MUMBAI-95.



## Geo-tagged photographs/videos of the facilities **Generator**



  
**DIRECTOR**  
Atharva Institute of Management Studies  
MUMBAI-95.





# Generator - Purchase bill

Original for Recipient / 1 Duplicate for Transporter / 1 Triplicate for Supplier / 1 Extra Copy

**POWERICA**

**TAX INVOICE**

SUBJECT TO BANGALORE JURISDICTION

POWERICA LIMITED  
31st KM Bommarashalli Village, Tumkur Road Nelamangala Taluk Bengaluru KARNATAKA 562123  
FACTORY PHONE No. 9811671123, 7304555190, 080-27724994/995597 C.IN No. U31100MH1984PLC032825  
Customer PO No.: AIMS/PO/21/23 Date: 16-12-2021

GSTIN : 29AAACP3812E1ZP IEC No: 0389015.06  
State Code : 29  
PAN No: AAACP3812E  
INVOICE NO: 192213981 DATE: 18-DEC-21

DETAILS OF RECEIVER/BILLED TO:  
ATHARVA INSTITUTE OF MANAGEMENT STUDIES  
AET CAMPUS  
MALAD-MARVA ROAD  
CHARKOP NAKA MALAD (WEST)  
MUMBAI -400095  
India

DETAILS OF CONSIGNEE/SHIPPED TO:  
ATHARVA INSTITUTE OF MANAGEMENT STUDIES  
AET CAMPUS  
MALAD-MARVA ROAD  
CHARKOP NAKA MALAD (WEST)  
MUMBAI -400095  
India

Invoice Type - B2CL  
GST NO: 27  
STATE: Maharashtra  
PAN NO: AAATA4246Q  
STATE CODE: 27

SI No.	NAME OF THE PRODUCT/SERVICE	HSN / SAC	UOM	QTY	RATE	AMOUNT	TAXABLE AMOUNT	CGST Rate	CGST Amount	SGST/UGST Rate	SGST/UGST Amount	IGST Rate	IGST Amount	TOTAL
1	ELECTRIC GENERATING SET, 180 KVA (STANDARD) D/G SET SR. NO.: 1901022570 Engine SR. NO.: 84962077 Alternator SR. NO.: 1211378424 PANEL NO.: 01PISM12111582	85021200	NOS	1	1070000	1,070,000.00	1,070,000.00	0.00	0.00	0.00	0.00	0.00	18.00	192,600.00
	Total			1		1,070,000.00	1,070,000.00		0.00		0.00		0.00	1,262,600.00

DETAILS OF GST PAID ON ADVANCE  
Adv. Receipt Number | Adv. Receipt Amount | Adv. Date | Adv. Tax | Adv. Tax Amount

Total adv. | Twelve Lakhs Sixty-Two Thousand Six Hundred Rupees ONLY

AMOUNT IN WORDS | Total Amount Before Tax | 1,070,000.00

IGST | 192,600.00

Tax Amount | 192,600.00

Total amount After Tax | 1,262,600.00

TRANSPORTATION MODE: DEEPAK FREIGHT CARRIERS

LR NO: 211527

VEHICLE NOS: MH-50/0857

Note: 1 PKGS

AIMS PURCHASE VOUCHER  
Voucher No. 192213981 Date: 16/12/2021  
Ledger Name: electric generator  
Chq. No. 002979 Date: 16/12/2021

Powerica Limited  
Certified that the Particular given are true & correct For POWERICA LIMITED  
Date: 16/12/2021  
Cheque No. 002979  
Amt. 12,62,600/-  
Interest @ 24% per annum will be charged if this bill is not paid within 15 days

Authorised Signature

Page 1 of 1

DIRECTOR  
Atharva Institute of Management Studies  
MUMBAI-95.





## Geo-tagged photographs/videos of the facilities Waste Collection Bins



*[Handwritten Signature]*

**DIRECTOR**  
Atharva Institute of Management Studies  
MUMBAI-95.





pictures of 2018-2019

**DIRECTOR**  
Atharva Institute of Management Studies  
MUMBAI-95.



## Geo-tagged photographs/videos of the facilities Composting Machine



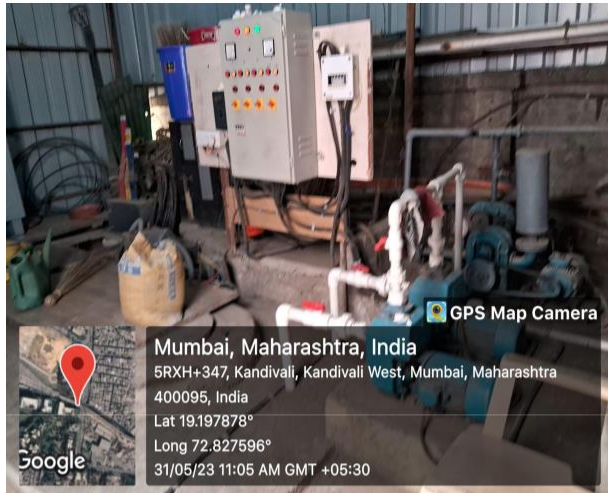
*[Handwritten Signature]*

**DIRECTOR**  
Atharva Institute of Management Studies  
MUMBAI-95.





## Geo-tagged photographs/videos of the facilities Sewage Treatment Plant (STP)



  
DIRECTOR  
Atharva Institute of Management Studies  
MUMBAI-95.





Geo-tagged photographs/videos of the facilities  
**Rain Water Harvesting**



  
DIRECTOR  
Atharva Institute of Management Studies  
MUMBAI-95.



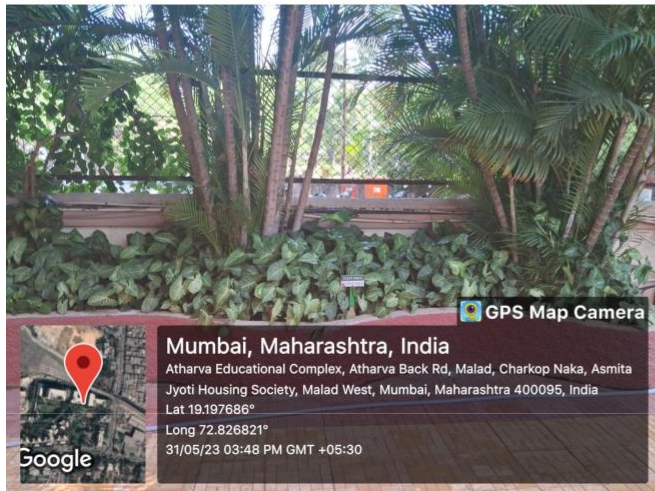




# ATHARVA INSTITUTE OF MANAGEMENT STUDIES

( Approved by AICTE, DTE & Affiliated to University of Mumbai )

## Geo-tagged photographs/videos of the facilities Green Campus



  
**DIRECTOR**  
Atharva Institute of Management Studies  
MUMBAI-95.





# ATHARVA INSTITUTE OF MANAGEMENT STUDIES

( Approved by AICTE, DTE & Affiliated to University of Mumbai )

Geo-tagged photographs/videos of the facilities

## Sprinklers



Waste Management pictures till pre - covid

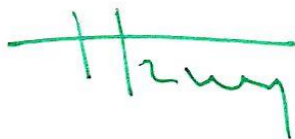
**DIRECTOR**  
Atharva Institute of Management Studies  
MUMBAI-95.





Equipment Photos





**DIRECTOR**  
Atharva Institute of Management Studies  
MUMBAI-95.





***DIVYANJAN FACILITIES***



*Hravy*

**DIRECTOR**  
Atharva Institute of Management Studies  
MUMBAI-95.





# ATHARVA INSTITUTE OF MANAGEMENT STUDIES

( Approved by AICTE, DTE & Affiliated to University of Mumbai )



Atharva Educational Trust, Atharva Back Rd, Malad, Charkop Naka,  
Asmita Jyoti Housing Society, Malad West, Mumbai, Maharashtra  
400095, India

Latitude

19.1979174°

Longitude

72.8260374°

Local 12:31:10 PM

GMT 07:01:10 AM

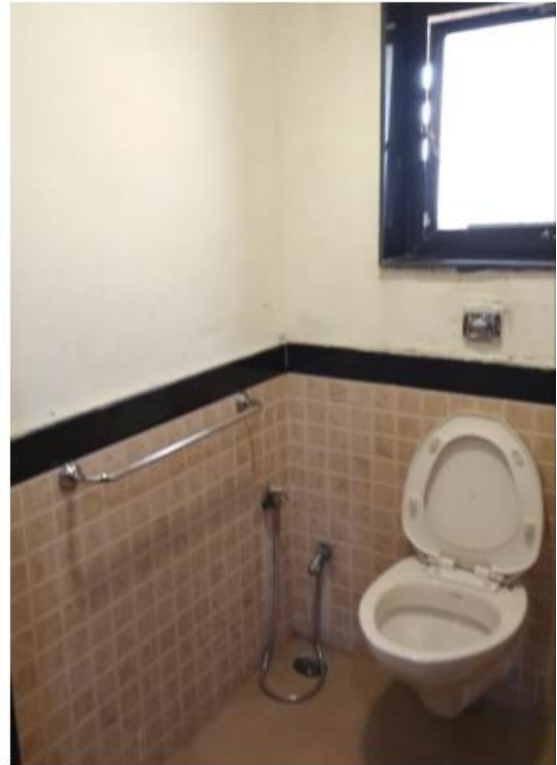
Altitude 6 meters

Tuesday, 11.10.2022

**DIRECTOR**

Atharva Institute of Management Studies  
MUMBAI-95.





)

*Hravy*

**DIRECTOR**  
Atharva Institute of Management Studies  
MUMBAI-95.





***Management of E-waste.***

The institution has an approved E-Waste Management and Disposal facility, in order to dispose it in a scientific manner.

- The e-waste generated in the form of workable computer peripherals, are again repaired and donated to rural areas of Ratnagiri.
- Obsolete monitor, printers, keyboard, mouse and other equipment discarded by the institute are sold as scrap to e-waste vendor.
- The cartridges of printers are refilled inside the campus.

**DIRECTOR**

Atharva Institute of Management Studies

MUMBAI-95.

